



PUBLIC NOTICE

2019 Floating Aquatic Vegetation Control Program



The California Department of Parks and Recreation Division of Boating and Waterways will be conducting herbicide treatments and mechanical harvesting to control **water hyacinth** (*Eichhornia crassipes*), **South American spongeplant** (*Limnobium laevigatum*), **Uruguay water primrose** (*Ludwigia hexapetala*), and **alligatorweed** (*Alternanthera philoxeroides*) in the Sacramento-San Joaquin Delta region and Suisun Marsh.

The following information is subject to change based on governmental requirements, weather conditions, plant growth and movement, waterway traffic, special status species surveys, presence of sensitive crops in adjacent lands, and other conditions.

Proposed Herbicide Treatment Period

Select Area 1 Sites and Areas 2-4: Mar. 6, 2019 – Nov. 30, 2019 **All Area 1 Sites:** June 1, 2019 – Nov. 30, 2019 (north of Hwy 12)

Potential Treatment Areas

Initially in and/or around, but not limited to the following areas: San Joaquin River, Old River, Middle River, Fourteenmile Slough, and Piper Slough. See maps below for treatment areas. DBW will focus treatment efforts on 'High Priority' and 'Priority' sites as listed on the map.



Herbicides Being Used

Glyphosate, 2,4-D, Imazamox, or Penoxsulam
(Herbicides are registered for aquatic use with US Environmental Protection Agency and the California Department of Pesticide Regulation)

Mechanical Harvesting

Potential Harvesting Dates:

January 2019 - April 2019 and July 2019 - December 2019

Potential Mechanical Harvesting Control Areas: Select areas of the Delta with high infestations or coverage of water hyacinth. See maps below for potential mechanical harvesting control areas.

Precautions

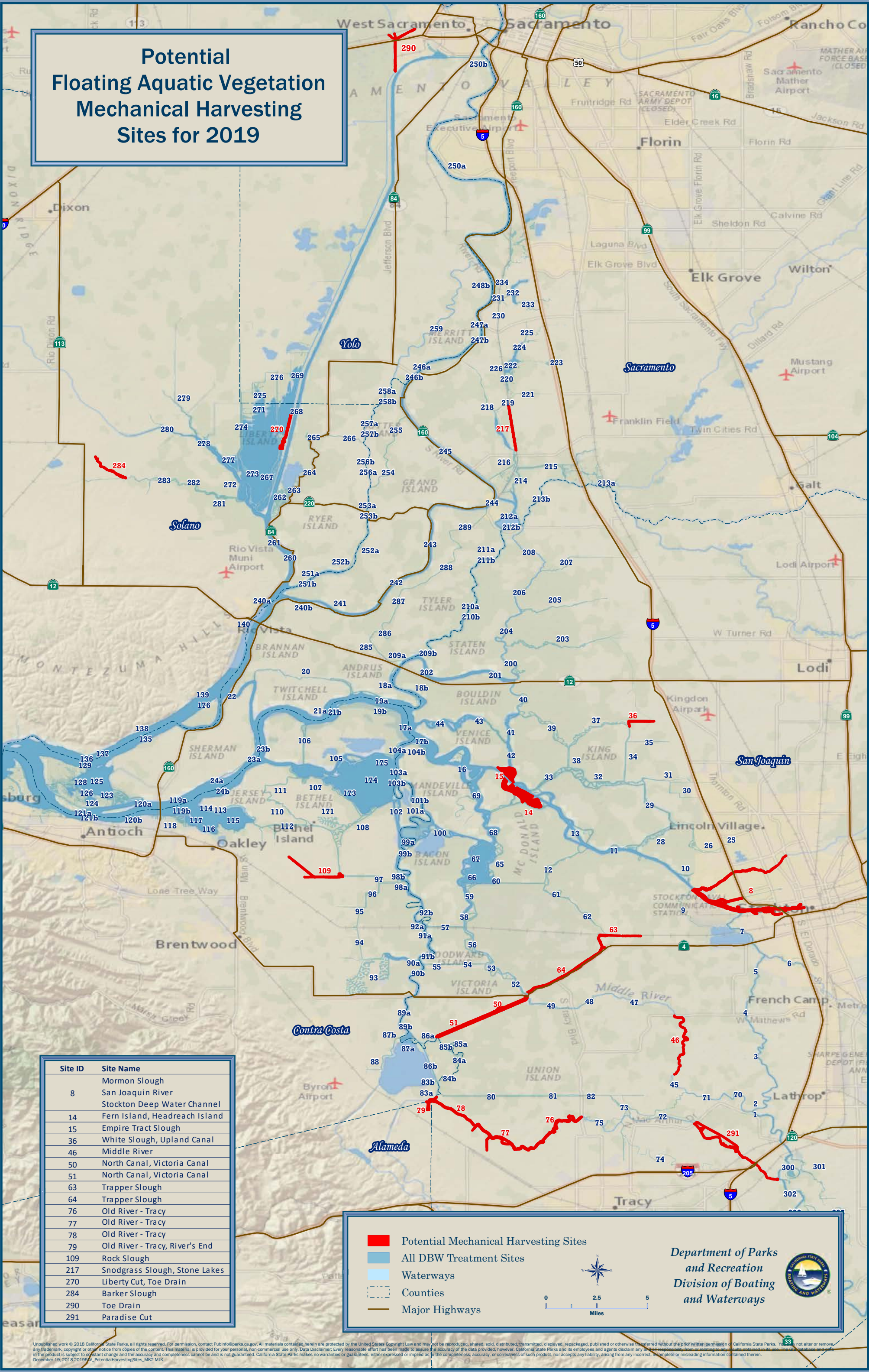
The public should not gather on or near boat docks during treatment applications. Boaters, swimmers, fisherman and other recreationists in an area being immediately treated are urged to heed directives by herbicide technicians, as they are aimed at protecting public safety.

Contact Information

To report sightings or for more information regarding the control program, please see DBW's website at www.dbw.parks.ca.gov, call 888-326-2822, or email at AIS@parks.ca.gov.



Potential
Floating Aquatic Vegetation
Mechanical Harvesting
Sites for 2019



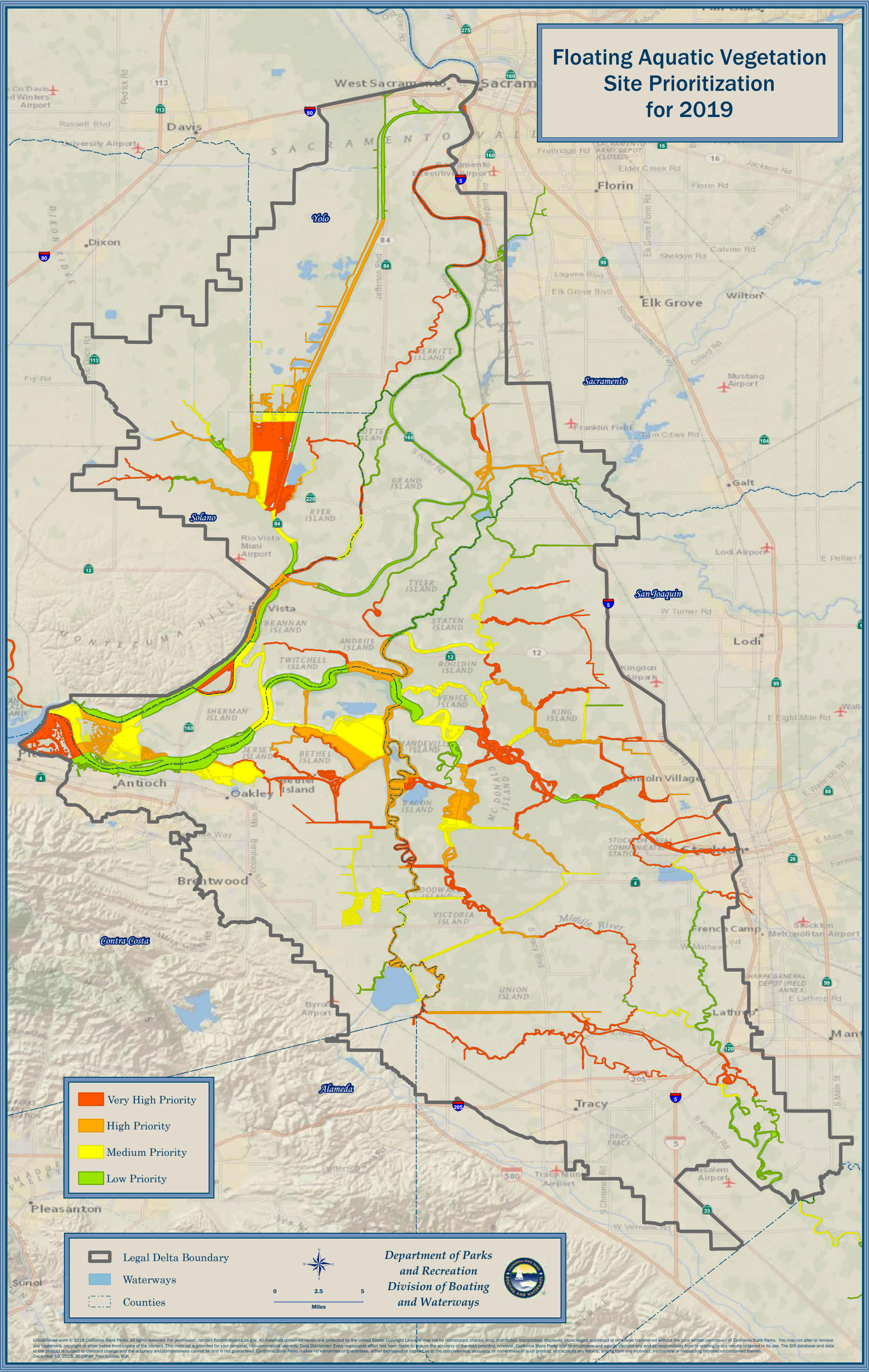
Site ID	Site Name
8	Mormon Slough
14	San Joaquin River
15	Stockton Deep Water Channel
36	Fern Island, Headreach Island
46	Empire Tract Slough
50	White Slough, Upland Canal
51	Middle River
63	North Canal, Victoria Canal
64	Trapper Slough
76	Trapper Slough
77	Old River - Tracy
78	Old River - Tracy
79	Old River - Tracy, River's End
109	Rock Slough
217	Snodgrass Slough, Stone Lakes
270	Liberty Cut, Toe Drain
284	Barker Slough
290	Toe Drain
291	Paradise Cut

- Potential Mechanical Harvesting Sites
- All DBW Treatment Sites
- Waterways
- Counties
- Major Highways

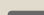
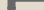
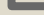
Department of Parks
and Recreation
Division of Boating
and Waterways



Floating Aquatic Vegetation Site Prioritization for 2019



- Very High Priority
- High Priority
- Medium Priority
- Low Priority

 Legal Delta Boundary
 Waterways
 Counties



A horizontal number line is shown with a blue line and black tick marks. The tick marks are labeled 0, 2.5, and 5. The word "Miles" is written below the line.

*Department of Parks
and Recreation
Division of Boating
and Waterways*



Unpublished work © 2018 California State Parks, all rights reserved. For permission, contact PubInfo@parks.ca.gov. All materials contained herein are protected by the United States Copyright Law and may not be reproduced, shared, sold, distributed, transmitted, displayed, repackaged, published or otherwise transferred without the prior written permission of California State Parks. You may not alter or remove any trademark, copyright, or other notices from copies of the content. This material is provided for your personal, non-commercial use only. Data Disclaimer: Every reasonable effort has been made to assure the accuracy of the data provided, however, California State Parks and its employees and agents disclaim any and all responsibility for any results obtained in its use. The GIS database and data are provided "as is" without warranty of any kind, either expressed or implied, including but not limited to the completeness, accuracy, or correctness of such product, nor accepts any liability, arising from any incorrect, incomplete or misleading information contained therein.

December 13, 2018, 2019FAC, PRI001085.MXD

Floating Aquatic Vegetation Site Prioritization for 2019 - South Delta

- Very High Priority
- High Priority
- Medium Priority
- Low Priority

Legal Delta Boundary

DBW Treatment Sites

Waterways

Counties

0

2.5

5

Miles

Department of Parks and Recreation

Division of Boating and Waterways

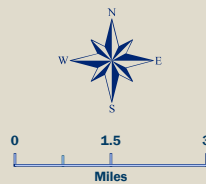


Unpublished work © 2018 California State Parks, all rights reserved. For permission, contact PublicInfo@parks.ca.gov. All materials contained herein are protected by the United States Copyright Law and may not be reproduced, shared, sold, distributed, transmitted, displayed, repackaged, published or otherwise transferred without the prior written permission of California State Parks. You may not alter or remove any trademark, copyright or other notice from copies of the content. This material is provided for your personal, non-commercial use only. Data Disclaimer: Every reasonable effort has been made to assure the accuracy of the data provided, however, California State Parks and its employees and agents disclaim any and all responsibility from or relating to any results obtained in its use. The GIS database and data in the product is subject to constant change and the accuracy and completeness cannot be and is not guaranteed. California State Parks makes no warranties or guarantees, either expressed or implied as to the completeness, accuracy, or correctness of such product, nor accepts any liability, arising from any incorrect, incomplete or misleading information contained therein.
December 19, 2018, 2019FAV_PrioritySite_South2.MX

Floating Aquatic Vegetation Site Prioritization for 2019 - Suisun Marsh

- Very High Priority
- High Priority
- Medium Priority
- Low Priority

- Legal Delta Boundary
- Suisun Marsh Boundary
- DBW Treatment Sites
- Waterways
- Counties



Department of Parks
and Recreation
Division of Boating
and Waterways

